

Connect the battery and power up the system

**select:** SECURITY, MENU, TOOLBOX, RIGHT ARROW, INSTALLER TOOLBOX

**enter:** 1561

**select:** System Configuration

Here is where you will be programming your different zones, or modifying the field programming. (See your Instalation/Programming Guide)

## Q.1 ZONE PROGRAMING

Scroll between options using ← or →

Move to previous or next prompt by selecting ↑ or ↓

### Q.1 RF SENSOR PROGRAMING (1 thru 48)

**select:** Sensor (zone) Type (see p.2) ← or →

**select:** Equipment Code (see p.2) ← or →

**enter:** Serial Number

Enter the serial number manually or Learn in the sensor by selecting: **Shift, Learn, then trip the sensor**

**select:** Equipment Age (New/Existing)

**select:** Sensor Loop Number

- Loop 1-Motions, Glassbreaks, Smoke, Recessed D/W, Panic Pendant, D/W with wire lead
- Loop 2-D/W using internal switch
- Loop 3-Flood and Freeze Sensors

**select:** Dialer Delay (Enabled/Disabled)

**select:** Voice Descriptor (see p.2)

**Insert** to add a word, then type the 3 digit code  
Repeat for additional words  
← and → to move between words

**select:** Sensor Reports (Enabled/Disabled)

**select:** Sensor Supervised (Enabled/Disabled)

**select:** Sensor Chine ← or →

- 0-Disabled
- 1-Voice Only
- 2-Voice with Ding-Dong
- 3-Loud Ding-Dong
- 4-Loud Ding-Dong with Voice
- 5-Ding-Dong

### SUMMARY SCREEN

Look over sensor information to make sure all settings are satisfactory.

**Edit Next** to add the next sensor

**Skip** to move to Wired Sensor programming (Q:02)

**Skip** (again) to move to Keyfob programming (Q:03)

### Q.2 WIRED SENSOR PROGRAMING (1-2)

**select:** Sensor (Zone) Type (see p.2) ← or →

**select:** Equipment Code (see p.2)

**select:** Equipment Age (New/Existing)

**select:** Normal State ← or →

- 0-Not Used
- 1-Normaly Closed
- 3-Normaly Open
- 4-Mixed with no EOL

**select:** Dialer Delay (Enabled/Disabled)

**select:** Voice Descriptor (same as RF sensor programming. See p.2)

**select:** Sensor Reports (Enabled/Disabled)

**select:** Sensor Chimes (same as RF sensor programming)

### SUMMARY SCREEN

Look over sensor information to make sure all settings are satisfactory.

**Edit Next** to add the next wired sensor

**Skip** to move to keyfob programming (Q:03)

**Skip** (again) to move to keypad programming (Q:04)

## Q.3 KEYFOB PROGRAMING

Q.3 FOB # (1 thru 8)

**select:** Fob Used (Used/Unused)

**select:** Equipment Code (see p.2) ← or →

**enter:** Serial Number (Same as RF Programming)

**select:** Equipment Age (New/Existing)

**select:** Emergency Key ← or →

- 0-Disabled
- 1-Auxiliary
- 2-Audible
- 3-Silent Panic
- 4-Fire

**select:** Fob Can Disarm (Enabled/Disabled)

**select:** Voice Descriptor (Same as RF Programming. See p.2)

**select:** Fob Arm with No Delay (Enabled/Disabled)

**select:** Fob Output

- 0-Disabled
- 1-Toggle Output
- 2-Momentary Output

### SUMMARY SCREEN

Look over sensor information to make sure all settings are satisfactory.

**Edit Next** to add the next keyfob

**Skip** to move to keypad programming (Q:04)

**Skip** (again) to move to exit/entry time (Q:05)

## Q.4 KEYPAD PROGRAMING

Q.4 KEYPAD # (1 thru 4)

**select:** Keypad Used (Used/Unused)

**select:** Equipment Code (see p.2) ← or →

**enter:** Serial Number (Same as RF Programming)

**select:** Equipment Age (New/Existing)

**select:** Emergency Key (Enabled/Disabled)

**select:** Voice Descriptor (Same as RF Programming. See p.2)

### SUMMARY SCREEN

Look over sensor information to make sure all settings are satisfactory.

**Edit Next** to add the next keypad

**Skip** to move to exit/entry delay time (Q:05)

## FIELD PROGRAMING

Change the Questions below accordingly:

### 2-WAY or DIGITAL

**Go To:** 13- enter 1 (2-way)  
enter 0 (digital)

### CELL BACKUP or POTS PRIMARY

**Go To:** 08-Enable

**Go To:** 63-Enable

**Go To:** 11-Enter Receiver Line#

**Go To:** 12-Enter CSID#

## EXITING SYSTEM CONFIGURATION

When at the top of a Question (ex: Q1:Select RF sensor # [01-48])

**press:** end

**Press:** exit (make sure the box IS checked in the "save changes" box)  
the system will perform a system reboot to implement the changes.

## 2GIG TECH SUPPORT

**855.2GIG.TECH** (855.244.4832)

## ZONE TYPES

- [01] ENTRY/EXIT1 (**DOORS**)
- [02] ENTRY/EXIT 2 (DOORS BY CUST REQUEST)
- [03] PERIMETER (**WINDOWS/GLASSBREAK**)
- [04] INTERIOR FOLLOWER (**MOTION**)
- [05] TROUBLE DAY/ALARM NIGHT
- [06] 24 HR SILENT
- [07] 24 HR AUDIBLE (**POLICE**)
- [08] 24 AUX (**MEDICAL, PANIC, FREEZE, H2O**)
- [09] FIRE/HEAT WITHOUT VERIFY (**SMOKE/HEAT**)
- [10] INTERIOR WITH DELAY (**MOTION**)
- [14] CARBON MONOXIDE (**CO DETECTOR**)
- [16] FIRE WITH VERIFICATION
- [23] NO RESPONSE
- [24] SILENT BURGLARY

## EQUIPMENT CODES

- 0000 - OTHER
- 0862 - DW10-345 **THIN D/W (SURFACE) CONTACT**
- 0863 - DW20-345 **RECESSED DOOR CONTACT**
- 0869 - PIR-345 **MOTION WITH PET IMMUNITY**
- 0864 - GB1-345 **GLASS BREAK DETECTOR**
- 0872 - SMKE1-345 **SMOKE DETECTOR (USA)**
- 0871 - SMK1-345C **SMOKE DETECTOR (CANADA)**
- 0868 - PANIC1-345 **PANIC BUTTON REMOTE**
- 0860 - CO1-345 **CO DETECTOR (USA)**
- 0859 - CO1-345C **CO DETECTOR (CANADA)**
- 0873 - TAKE-345 **TAKEOVER MODULE**
- 0866 - KEY1-345 **KEYFOB**
- 0867 - PAD1-345 **KEYPAD**
  
- 0637 - HONEYWELL D/W "5816"
- 0470 - HONEYWELL R-D/W "5818MNL"
- 0533 - HONEYWELL PIR "5890"
- 0530 - HONEYWELL PIR "5894PI"
- 0519 - HONEYWELL GLASS BREAK "5853"
- 0589 - HONEYWELL SMOKE "5008W3"
- 0557 - HONEYWELL HEAT SENSOR "5809"
- 0624 - HONEYWELL FLOOD SENSOR "5821"
- 0491 - HONEYWELL PANIC PENDANT "5802MN2"

## VOICE DESCRIPTORS

002 <b>ABORT</b>	040 chime	078 family	116 inside	154 not ready	192 sensors	230 thirty
003 ac	041 closet	079 fan	117 instant	155 no delay	193 session	231 three
004 access	042 code	080 fifteen	118 interior	156 no entry delay	194 set	232 to
005 alarm	043 communications	081 fifty	119 intrusion	157 nursery	195 seven	233 tool
006 and	044 computer	082 fire	120 is	<b>158 OFF</b>	196 seventeen	234 transmitted
007 announcement	045 control	083 fire alert	<b>121 KEY</b>	159 office	197 seventy	235 transmitter
008 area	046 cool	084 fire detector	122 keyfob	160 on	198 shed	236 trouble
009 arm	047 crawl	085 first	123 keypad	161 one	199 shop	237 turn
010 armed	048 current	086 five	124 kids	162 one hundred	200 side	238 twelve
011 arming	<b>049 DAY</b>	087 flood	125 kitchen	163 output	201 silent	239 twenty
012 at	050 degrees	088 floor	<b>126 LAUNDRY</b>	164 outside	202 siren	240 two
013 attic	051 den	089 fluid	127 left	<b>165 PANEL</b>	203 six	<b>241 UNLOCK</b>
014 audio	052 detector	090 foil	128 level	166 panic	204 sixteen	242 upper
015 auto	053 dim	091 for	129 library	167 pantry	205 sixty	243 upstairs
016 automation	054 dining	092 forty	130 light	168 patio	206 skylight	244 user
017 auxiliary	055 disarm	093 four	131 lights	169 perimeter	207 sliding	245 utility
018 away	056 disarmed	094 fourteen	132 liquor	170 phone line	208 smoke	<b>246 VALVE</b>
<b>019 BABYS</b>	057 dock	095 fourth	133 living	171 play	209 sounder	247 voice
020 back	058 door	096 freeze	134 loading	172 police	210 south	<b>248 WALL</b>
021 basement	059 downstairs	097 freezer	135 lock	173 pool	211 space	249 water
022 bathroom	060 driveway	098 front	136 loft	174 pound	212 spare	250 west
023 battery	<b>061 EAST</b>	099 furnace	137 low	175 power	213 stairs	251 window
024 bedroom	062 eight	<b>100 GAME</b>	<b>138 MAIN</b>	176 press	214 star	252 wireless
025 bonus	063 eighteen	101 garage	139 maintenance	177 previous	215 status	<b>253 YARD</b>
026 break	064 eighty	102 gas	140 master	178 pump	216 stay	<b>254 ZERO</b>
027 button	065 electric	103 glass	141 medical	<b>179 RADIO</b>	217 stop	255 zone
028 bypass	066 eleven	104 glassbreak	142 medicine	180 ready	218 storage	
029 bypassed	067 emergency	105 guest	143 menu	181 rear	219 study	
<b>030 CABINET</b>	068 enter	106 gun	144 middle	182 relay	220 sump	
031 cancel	069 entrance	<b>107 HALL</b>	145 monitor	183 remote	221 supervision	
032 carbon monoxide	070 entry	108 hallway	146 motion	184 repeat	222 system	
033 cellar	071 error	109 hanging	147 motion detector	185 rf jam	<b>223 TAMPER</b>	
034 cellular	072 exercise	110 hang up	148 mud	186 right	224 temperature	
035 cell radio	073 exit	111 heat	<b>149 NINE</b>	187 room	225 ten	
036 center	074 exit now	112 high	150 nineteen	<b>188 SAFE</b>	226 terminated	
037 check	075 exterior	113 home	151 ninety	189 second	227 thermostat	
038 chest	076 external	114 house	152 north	190 security	228 third	
039 childrens	<b>077 FAILURE</b>	<b>115 ICE</b>	153 not	191 sensor	229 thirteen	

# Z-WAVE QUICK PROGRAMING GUIDE

## IN SYSTEM CONFIGURATION

- Q79: Enable/Disable Z-Wave Feature (1-3)
- Q80: Enable/Disable Switches
- Q81: Enable/Disable Thermostats
- Q82: Enable/Disable Locks
- Q83: Select Fahrenheit/Celsius

## LINKING A THERMOSTAT OR SWITCH

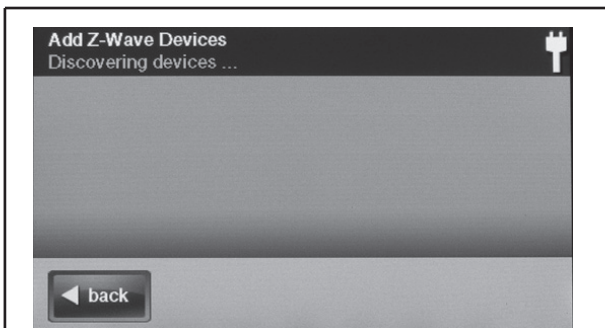
- select: Home Services
- select: Tool Box
- enter: Master Code (default 1111)
- select: Add Devices
- press/release: The binding button on the thermostat or switch
- 2GIG-Z-STAT: PRESS MENU ON THE RIGHT, THEN MATE ON THE LEFT (TWICE)
- Allow time for the panel to download the devices information
- select: Back
- select: Back

## CREATING A SCENE

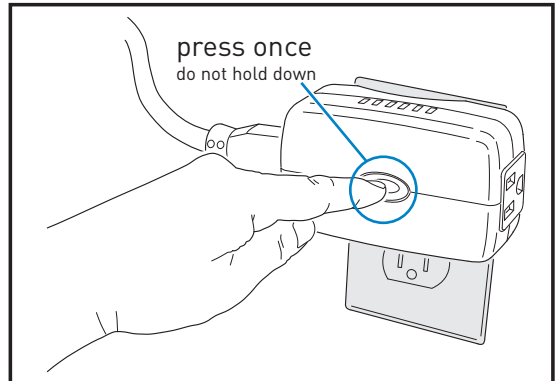
- select: Scenes
- select: Add Scene
- enter: A Name for the Scene (eg, Disarm)
- select: OK
- select: Add to create the scene
- select: Z-Wave Thermostat/Switch
- select: Desired Mode and Setpoint for Thermostat
- ON/OFF for switch
- select: OK
- select: Back
- select: Run to test scene
- select: Back

## CREATING A RULE (if accessible locally)

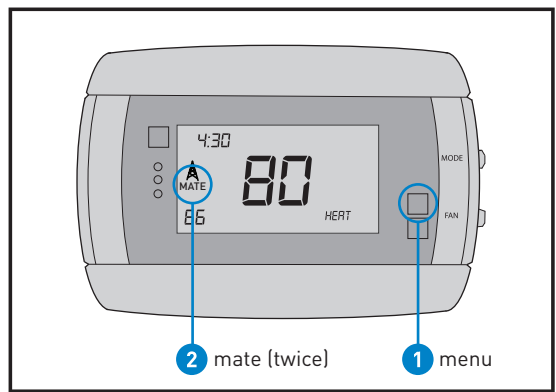
- select: Rules
- select: Add Rule
- select: Event use right and left arrows
- select: Scene use right and left arrows
- select: Back



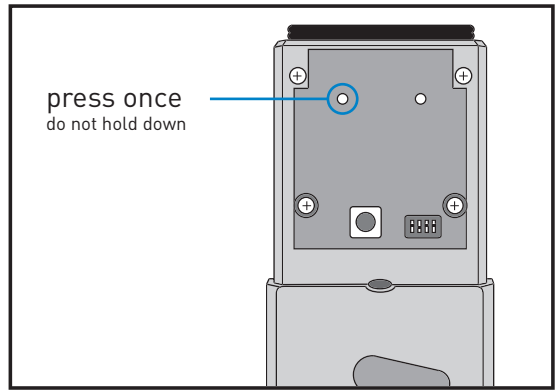
add z-wave device screen



linking a lamp or appliance module  
evolve modules you must press twice quickly



linking the 2GIG Z-STAT



linking the Kwikset Z-Wave Locks